

SpeedoHealer INSTALLATION

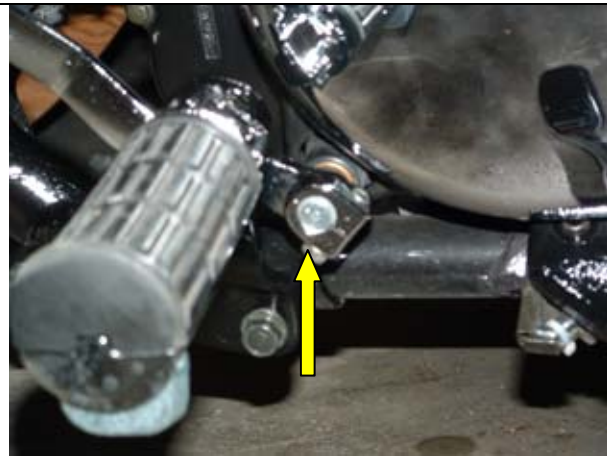
2004 Suzuki VZ1600 Marauder (M95) / Kawasaki Vulcan VN1600 Mean Streak

by Todd K. (USA)

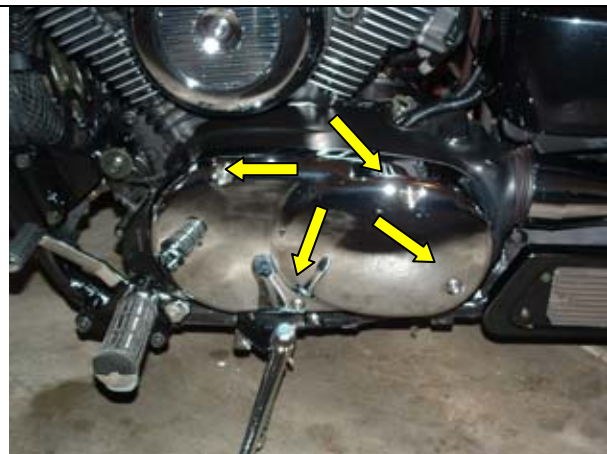
Note: You need an SH with Kawasaki-I harness kit.
Insert the connector leads as per the diagram "A" supplied with the Harness kit.



1. Remove the left foot peg by removing the two 14mm bolts securing it to the motorcycle frame.



2. Next remove the 10mm bolt holding the gear shift lever on.
(Note: you may wish to mark the levers position relative to the gear shaft to aid in correct placement during reassembly).



3. Remove the four 5mm Allen bolts holding the left side cover on.

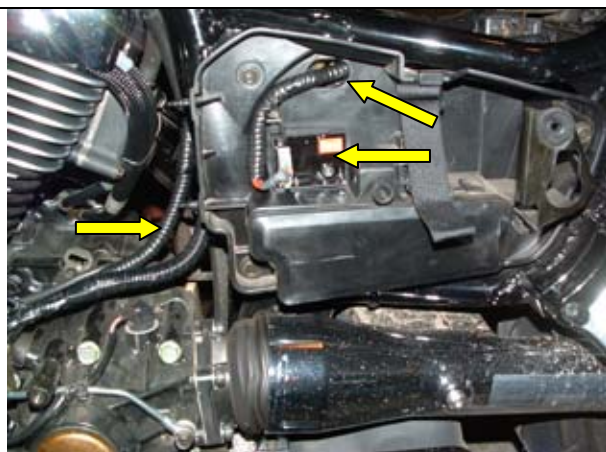


4. Once the cover is removed, find the speed sensor and disconnect the connector.



5. Plug speedohealer wiring harness in-line with the speed sensor connector you disconnected.

(Note: The supplied wiring harness is red. I encased mine with 3/8" flexible tubing to further protect the cable and to give it a stock appearance.)



6. Route supplied SH harness to where you want to mount the speedohealer. *(I placed mine behind the left side panel) It made for an easy install, protected the electronics and there is already a hole to assist in routing the cable.*



7. Reinstall the cover and Allen bolts.



8. Reinstall the shifter lever paying attention to the index marks you made earlier and tighten the 10mm bolt.



9. Reinstall the left foot peg and tighten the 14mm bolts.

Now, open the speedohealer on-line calculator to calibrate your speedometer.