

Speedo Healer Install

Walkthrough on 2004 Honda CBR-600RR

by Justin OConnell (Colorado, USA)

The following is my personal method for install. I work on this particular motorcycle very frequently. I believe this to be the best way to install this system, given my high experience level with this model motorcycle, but there are other ways to do this if you choose.

This install took just over one hour for me to complete. Depending on your experience level, **expect between 1 and 2.5 hours for install.**

Before install, make sure you have the following **required tools:**

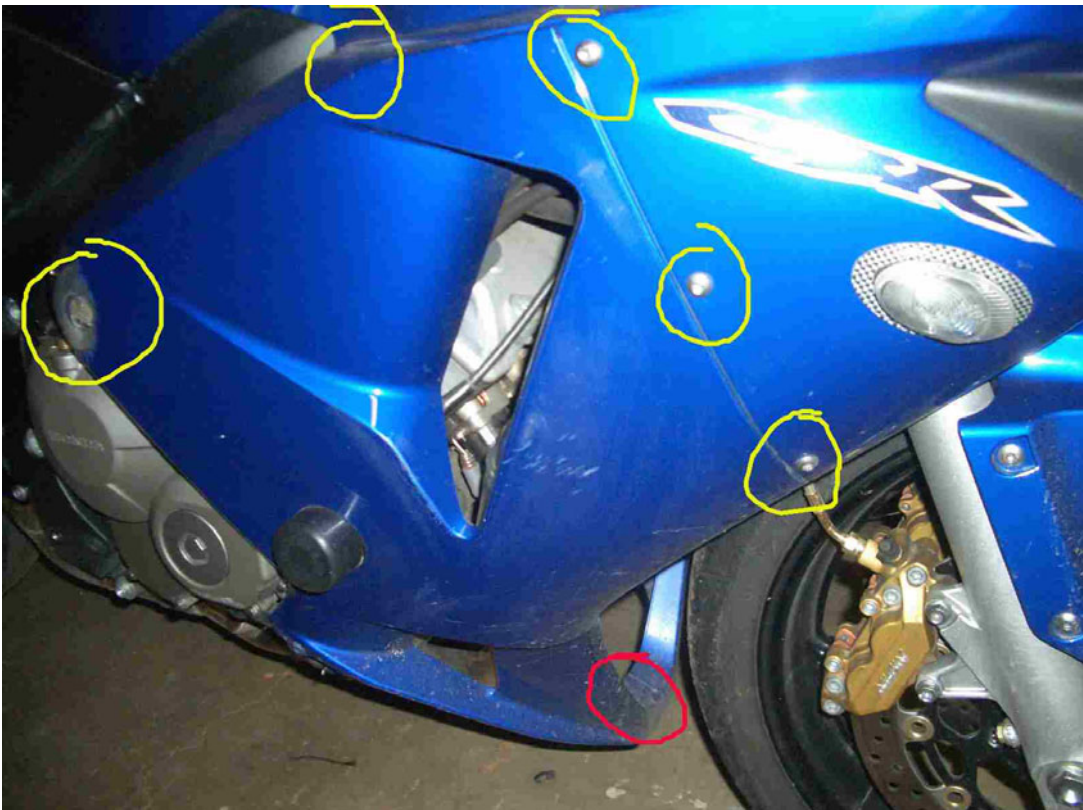
- a) 5mm Allen Wrench or T-Handle
- b) Large flat-head screwdriver
- c) Socket wrench and extension
- d) 10mm metric socket
- e) 12mm metric socket
- f) small phillips head screwdriver (for the 1/4 turn plastic fasteners)
- g) Wire cutters (for zip ties)

Most fasteners are 5mm Allen-wrench type fasteners. Exceptions are listed for the most part.

- 1) Begin by removing the lower belly-pan fairings, by removing the two bolts on each side, and the six bolts on the bottom, indicated in yellow.



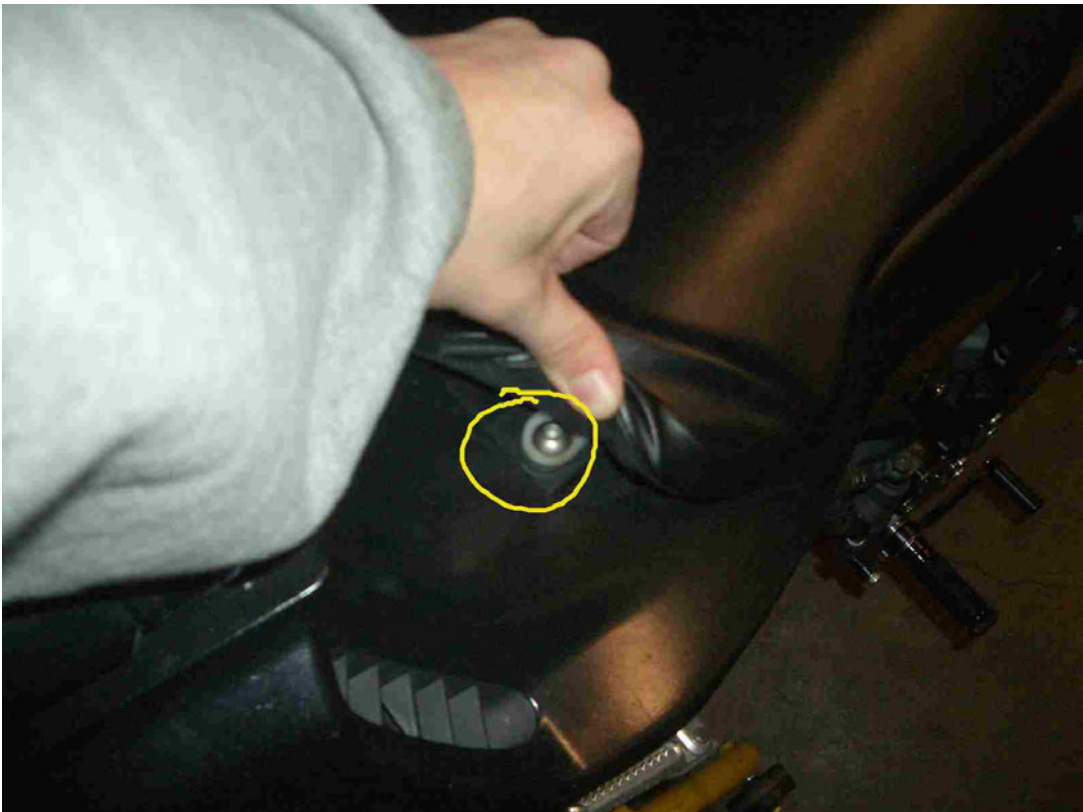
- 2) Remove both side fairings, by separating the bottom of the two fairings (indicated in red) and removing the five fasteners from both sides (yellow).



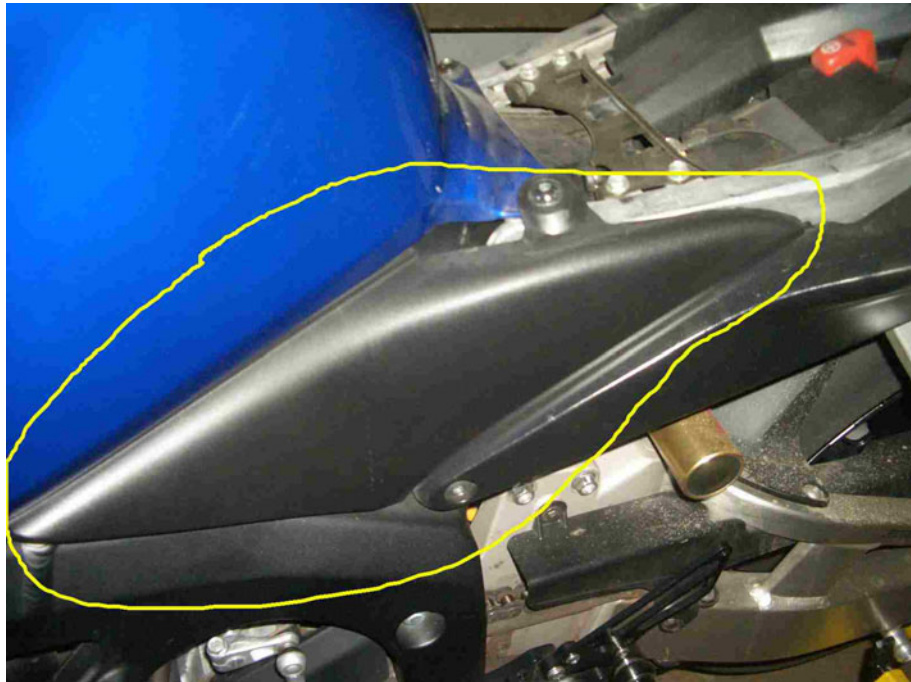
- 3) Remove the plastic fastener (1/4 turn type black plastic fastener) on inside of both ram air covers (below yellow), and then remove the covers by flexing the front of the covers over the tab holding it to the upper.



- 4) Remove the seat. Lift at the rear corners of the seat to access 2 bolts. Then slide backward to remove.



- 5) Remove the black plastic covers from both sides by pulling outward on the front.



- 6) Remove tank cover by removing 9 bolts, 2 in front, 2 on sides, and 2 in the rear of the cover (yellow). The final three are on the gas fill cap, and are indicated in the picture, note, that only 3 of the bolts on the gas cap need be removed. After removing these bolts, you will need to unlock the gas filler to remove it.



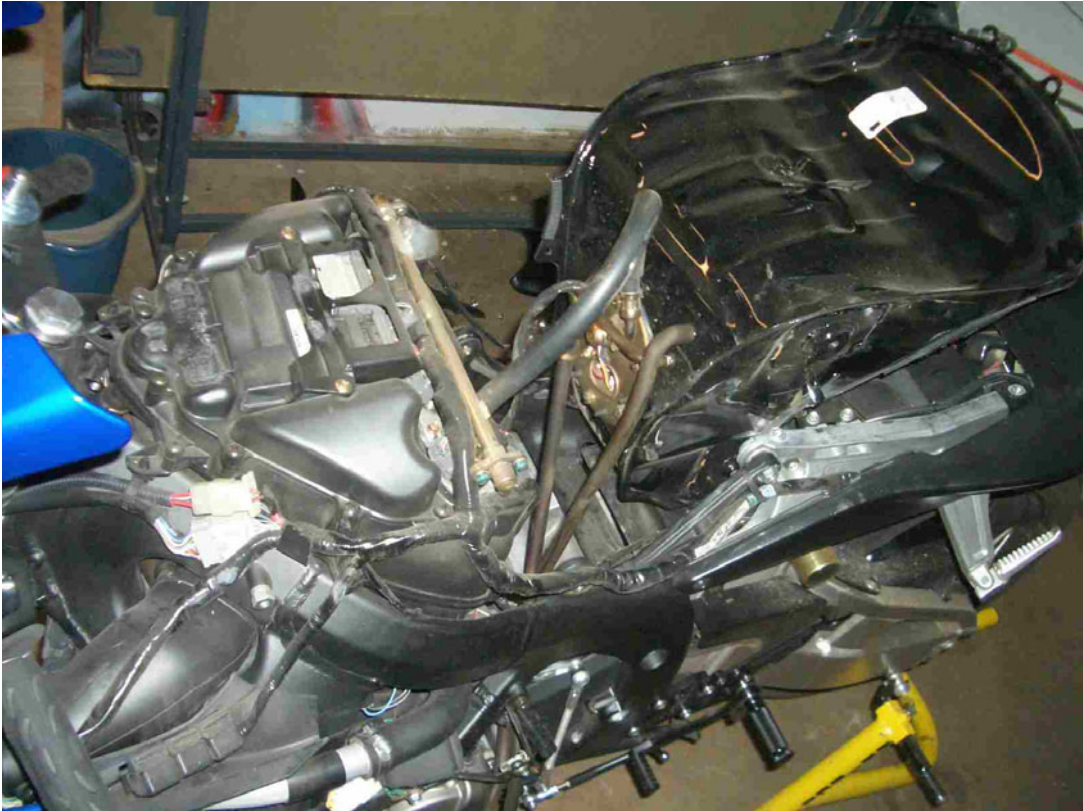
- 7) After removing the tank cover, replace the gas fill cap assembly onto the metal tank. No need to re-bolt it, as the lock will hold it in place.



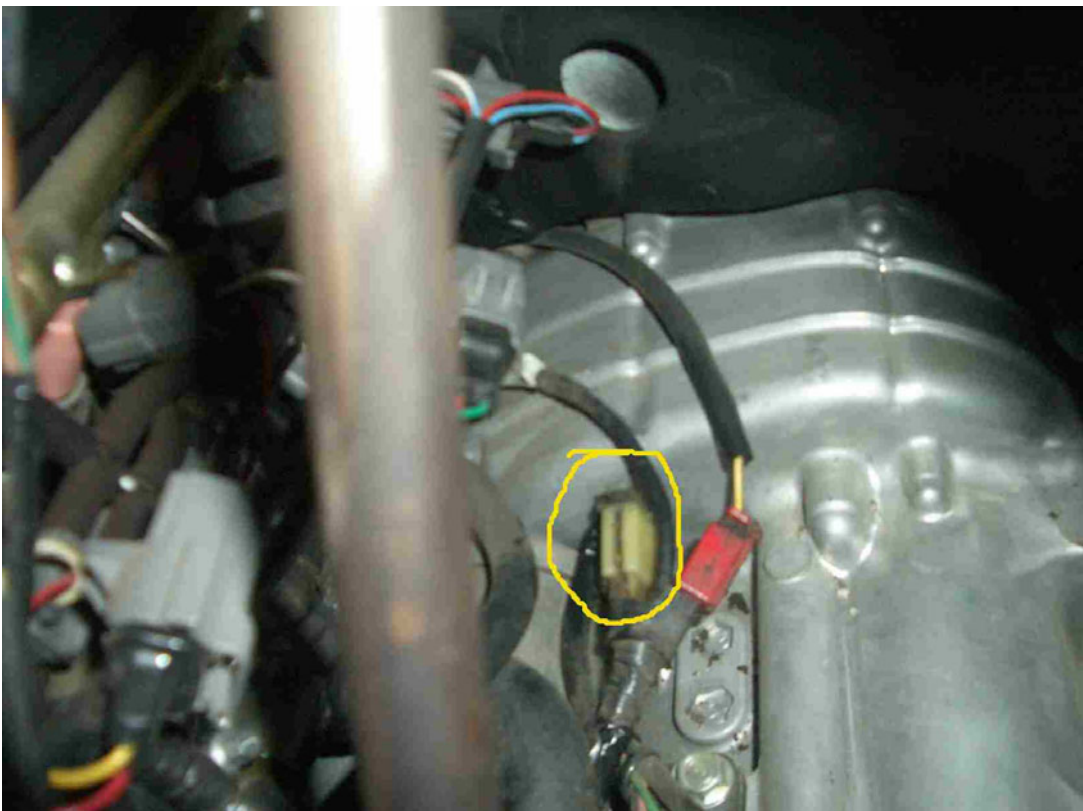
- 8) Remove the bolts holding the tank in place. There are two on each side (yellow). Make sure to free the wires run along the sides before lifting. The rear bolts are 10mm metric bolt. The front bolts are 12mm metric bolts.



- 9) Rotate the front of the tank up and back, and secure it in this position. This will **not** require removing any fuel lines or wires from the tank.



- 10) Looking below where the tank sat, we can see the harness we need for the speedo heater. It is white in color; however mine was dirty enough to make it look brown before cleaning.



- 11) Separate the two ends of the harness found in step 10, and connect the speedo heater harness in line with this connector. It will look as follows.



- 12) Run the harness under the tank, towards the direction where you want to mount the unit. I chose the tail trunk of the bike for mine, but mount where you like. Make certain that the connectors are not in the way of the tank before moving on. I suggest completing the following steps **before** bolting the removed pieces back into place.

- 13) As you drop the tank back into place, you need to pull on the overflow drain tubes that have been pulled out of place by moving the tank. Pull the hoses downward as you drop the tank, then re-feed the hoses through the loop near the kickstand. See picture below.



- 14) Test the route of speedo healer cable the rest of the way to the mounting location. Here is a picture of how I routed mine.



- 15) Connect the speedo healer to the harness and test its functionality as described in the supplied install manual. If it works, continue. If it does not, check your connections and that the cable isn't pinched under anything.
- 16) Mount the speedo healer main unit in the place of your choosing. Here is a picture of where I put mine.



- 17) Bolt on the tank, and all of the removed fairings.
- 18) Program the speedo healer. Custom directions can be generated on <http://www.speedohealer.com/eng/adjust.htm>